



# The Bamboo School

## Re-Engineering Rural Education:

# IS THERE ANY ROOM FOR MUSIC ?



Mechai Viravaidya Foundation

Mechai Bamboo School



Population and Community Development Association

Education to foster

Future

Social Entrepreneurs

and

Community

Development Leaders

and to help rectify

the poor state

of

Rural Thai Education

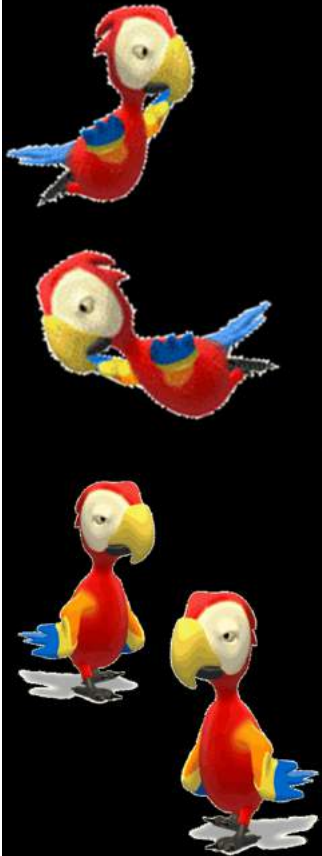


The Thai education system  
**concentrates on**

**ROTE  
MEMORIZATION**

**and emphasizes**

**literacy and  
numerical skills**





With **weak emphasis** on

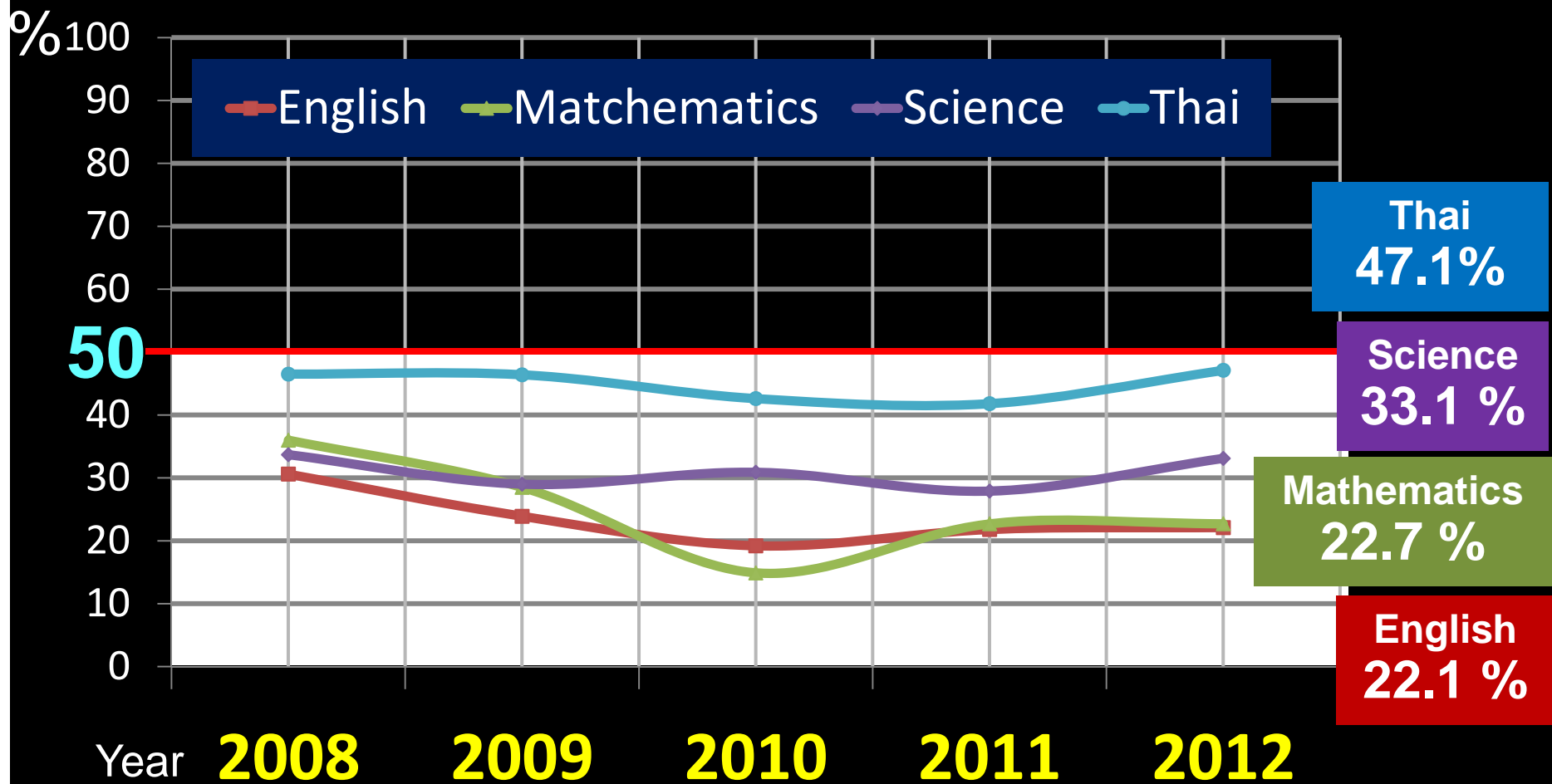
New Ideas

and

Creativity Skills

# Low Achievement of Thai Education

National average performance  
for year 12 exams

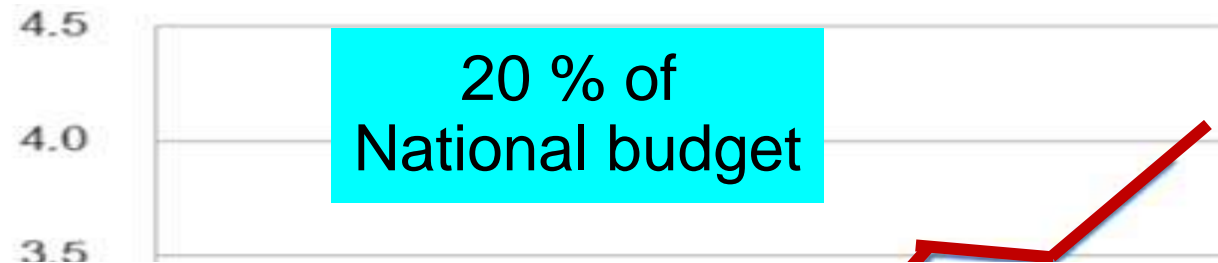


# Thai Education

## Budget

Doubled in during last 8 years

Unit : 100,000 Million Baht



**This percentage  
is the 2<sup>nd</sup> highest  
proportion in the world**

# Negative Consequences on Villages of Our Education & Rural Development Practice





# Farmers are getting older





# The two age groups remaining in the village



Our Thai  
educational system

**is not** preparing  
rural students for

**the world of tomorrow**

We need  
to change  
in 3 ways

What we teach

How we teach

as well as

The role

of the school

he school has to **change** from  
being just

**School for students**  
**into**

**A Lifelong**  
**Learning Center**



for students,

their families

and

the entire community

while **the school**  
must also become

a **HUB** for

Community  
Development

# We have to advance

From this:



To this:



as pioneered by a handful  
of educational institutions

including

The  
Bamboo School



# The Bamboo School

IS WORKING TOWARDS



**THROUGH CRAFTING**

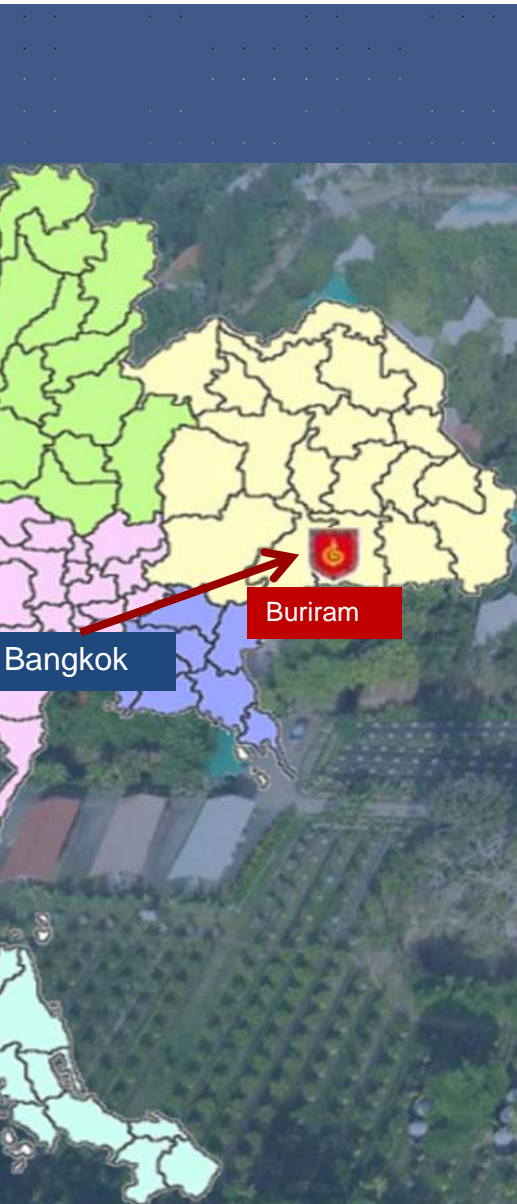
**FUTURE**

**SOCIAL ENTREPRENEURS**

**AND**

**COMMUNITY DEVELOPMENT**

**LEADERS**



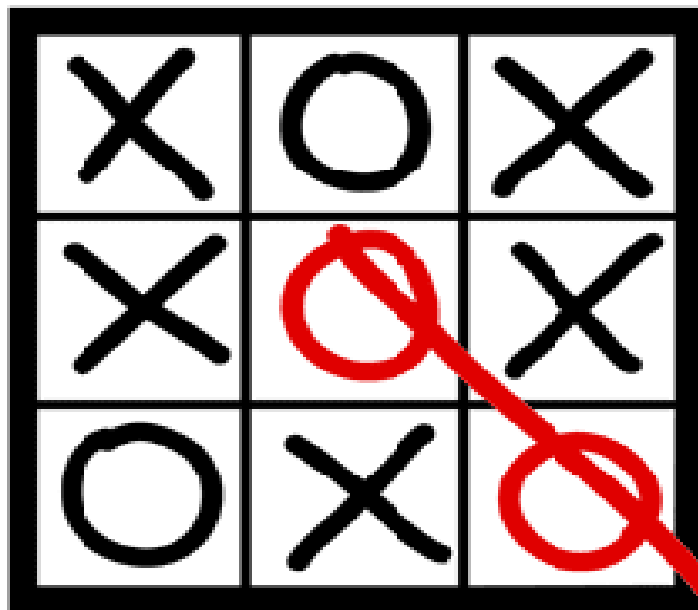




We are fostering a new generation

...who are stimulated to

**THINK  
OUTSIDE  
THE BOX**







y paint only

1 11 2







t class





# Canned Vegetables





# American Standard vegetables



















# World's largest bamboo Geodesic Dome













# Students applying for admission to grade 7



are interviewed and selected

Students also interview parents





# Democratic Education

Two students are elected  
to sit on the **school board**





Student **involved** in purchasing.





Measuring the price of raw materials at the market





# Surveying prices before purchasing



# Students participate in



# teacher selection



# Fostering new attitudes





# Understanding hunger



# Creative Discipline



**Phones**  
can only be used  
for one hour  
per week



**Letter writing  
replaces  
telephones**





# Question Time





Answer Time





Independent choice learning period







# Learning outside the classroom





# Students produce **Bio-Diesel**









# for **classroom** and **dormitory**





# Studying Solar Powered water pump



## LED light bulb production



school fees are paid by  
parents and students  
by performing  
community service  
and planting trees



Parents perform  
**400 hours**  
community service (8 hours per week)





**Good deeds and community service**  
by students in lieu of school fees

**12 hours per week**



# Community Service...

## teaching young students in villages





# Environmental Protection





# Promoting Environmental Awareness Among Children



# Cleaning of Village, School and Temple





# Good Deeds **Pool**











## **Life saving swimming classes for students from rural government schools**



# Identifying Corruption & Solutions



Students propose that as a **first step...**  
**all schools should become**



# Student Ombudsman



# School garbage separation bins



Glass

Paper

Plastic

Corrupt  
people



survey amongst three groups  
showed that

the majority regarded  
corruption as acceptable  
if benefits were shared

Government Officials = 62 %

Business People = 65 %

Students are also involved  
in **tackling inequalities**



and in **proposing solutions**



Grandparents & grandchildren:

A partnership to raise income,  
strengthen bond and prevent migration



There are 1.5 million families where





**Income generating activities  
for vulnerable groups**

(Mushroom growing for handicapped)



The teaching of  
agricultural  
and  
business skills  
is an  
important objective

Only **30%** of students  
who complete primary, secondary  
or tertiary education  
are able to find **employers**.

**70%** are forced to become  
**self-employed**,  
without training



# School “Poverty Eradication” Plot

(40 m x 40 m)





# Out of Season Lime

## grown in cement rings









# Innovative method of farming on poor soil



Growing cantaloupe







# Ready for the market





mushrooms grown in retired beach umbrellas



500 mushroom bags per tent





# Student-run agricultural business





# flower and decorative plant business





# Preparing to grow hydroponic vegetables





# Student hydroponic business









# Other Student businesses

## Gas station



# Soap Making Business: Clean & Safe





# Student's rice mill





# Student-initiated pilot project

elchair Agriculture  
สำหรับผู้ที่นั่งรถเข็น : งานวิจัยโดยนักเรียนมีชัยพัฒนา













The school is determined to  
**inspire students**  
to become citizens who are:

**honest, willing to share**

**Innovative & resourceful**

**happy & caring**

and also **possess management &**

**business skills**

Social

Development

Bamboo School also assists  
students to find

Holiday Job Training  
Opportunities



# Work experience: Hotel, Hospital, Restaurant





# Music for schools and communities by Bamboo School's Ukulele Band





# Student music business



Music is an  
important and powerful  
tool to foster  
positive  
human development



arning to share through music





arning to share through music





# Student Ukulele band entertaining customers





Television performance for HM the King's Birthday





# Teaching music to disabled students

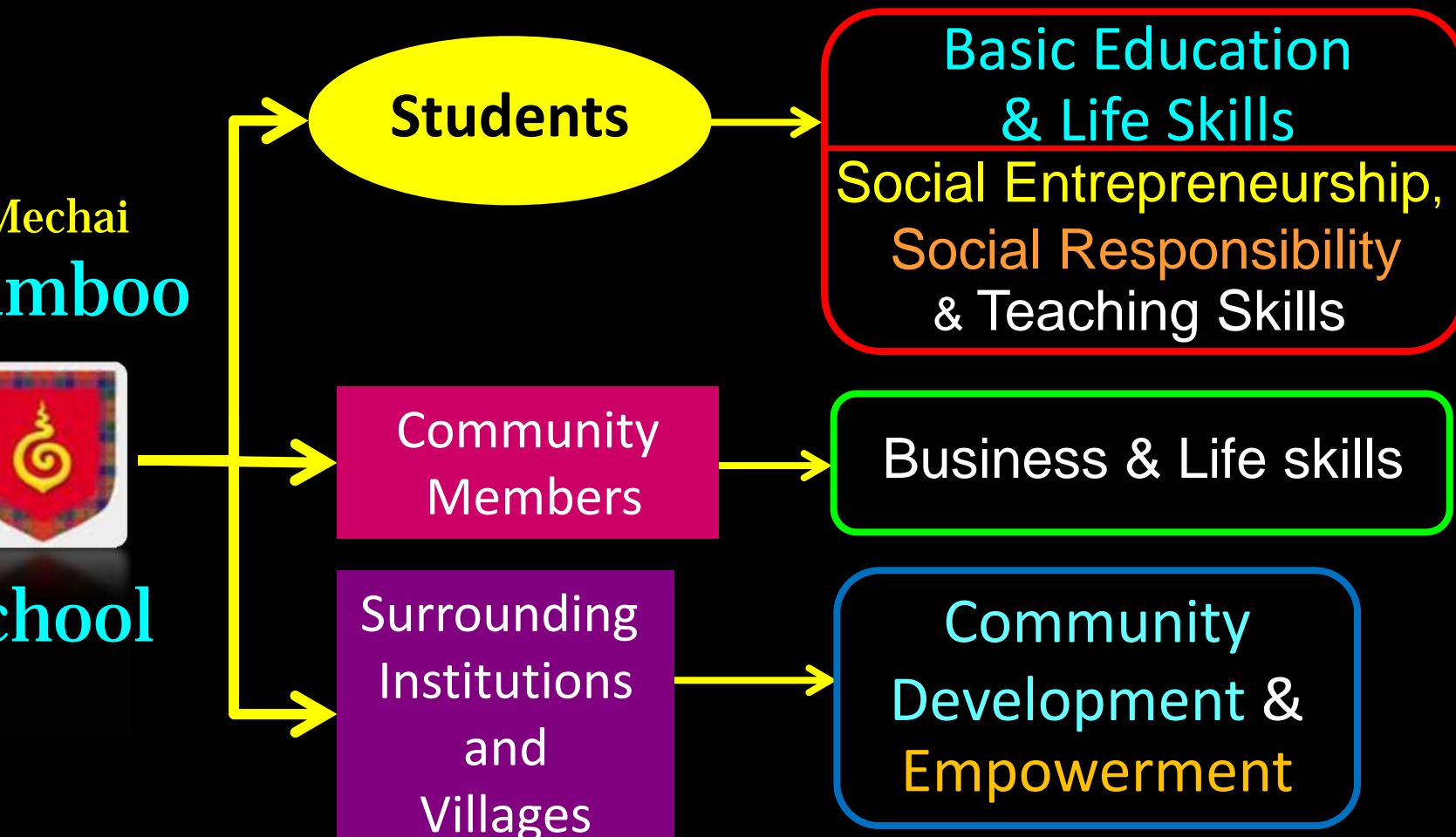


# Teaching music to disabled students





# Knowledge & Skills imparted by the Bamboo School



**the Bamboo School** is now

assisting

**rural institutions**

&

**communities**



to establish their own

**Sustainable**

**ocial Enterprises**

**( Business Arm )**

to help **raise income** and

**improve the quality of life**



Training to enable







# Visit by the ASEAN Association for people with Disabilities







...and requesting help to establish  
wheelchair agriculture projects





# Training – The Bamboo school serves as a Hub for Community Development





Poverty Eradication  
Social Enterprise Farms  
are being established  
to help raise income  
for rural schools  
as well as to train students,  
their families and other





# Students adding color



# Farm begins to take shape





# Students work on school's poverty eradication farm





# Advanced stage of farm





# Daily agricultural activities





# Book-keeping lesson





# Business training and practice for primary school Students





# Vegetables ready for selling





Parents buy directly at the school



# School microfinance for poor parents grandparents to start their own business





# Small businesses started with micro - credit loans from the school









Chilies and vegetables



# Large Social Enterprise Silk Farm





# Many products at Social Enterprise Farm in a village





# Community Mushroom Social Enterprise





# Social Enterprise Farm operated by **women's group**



# Beginnings of a Social Enterprise Farm at a **temple**





# Simple Social Enterprise Farm cared for by elderly citizens





# Social Enterprise Farm at a Health Center





# Income generated from mushrooms for Wheelchair-bound villages





# Social Enterprise Farm in a Small Prison





# Social Enterprise Farm in a Small Prison



The Bamboo School  
has generated  
considerable interest  
in rural schools  
throughout Thailand



Association of Small Community Schools of Thailand,  
representing 14,000 schools



has requested our assistance  
to enable its member schools to become  
community lifelong learning



Mechai Bamboo School



[mechai@pda.or.th](mailto:mechai@pda.or.th)

Life is a Journey